



TECHNICAL INFORMATION (T010-T012; n04)

SIMON – T010
ISABELLA – T011
PATRICK – T012
Spare Part Group n04

GLAZING

RECOMMENDATION FOR OPTICAL LENSES:

- Frames have 5.0 base curve
- Flatter lenses should have 5.0 curve bevel applied to lens edge to maintain proper frame curve and ease adjustment

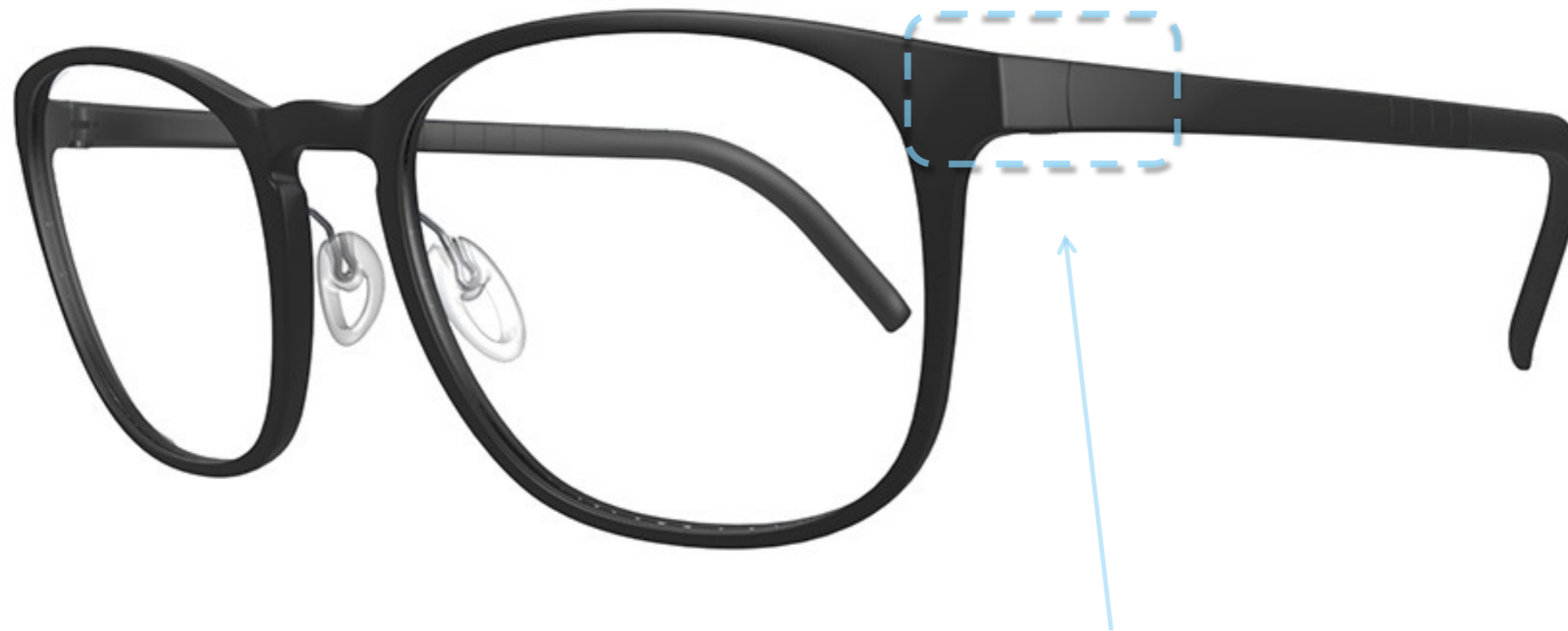
GLAZING AIDS:

- Patterns are available through customer service
- OMA shape files are available at www.silhouettelab.com

Attention: COLD GLAZING ONLY



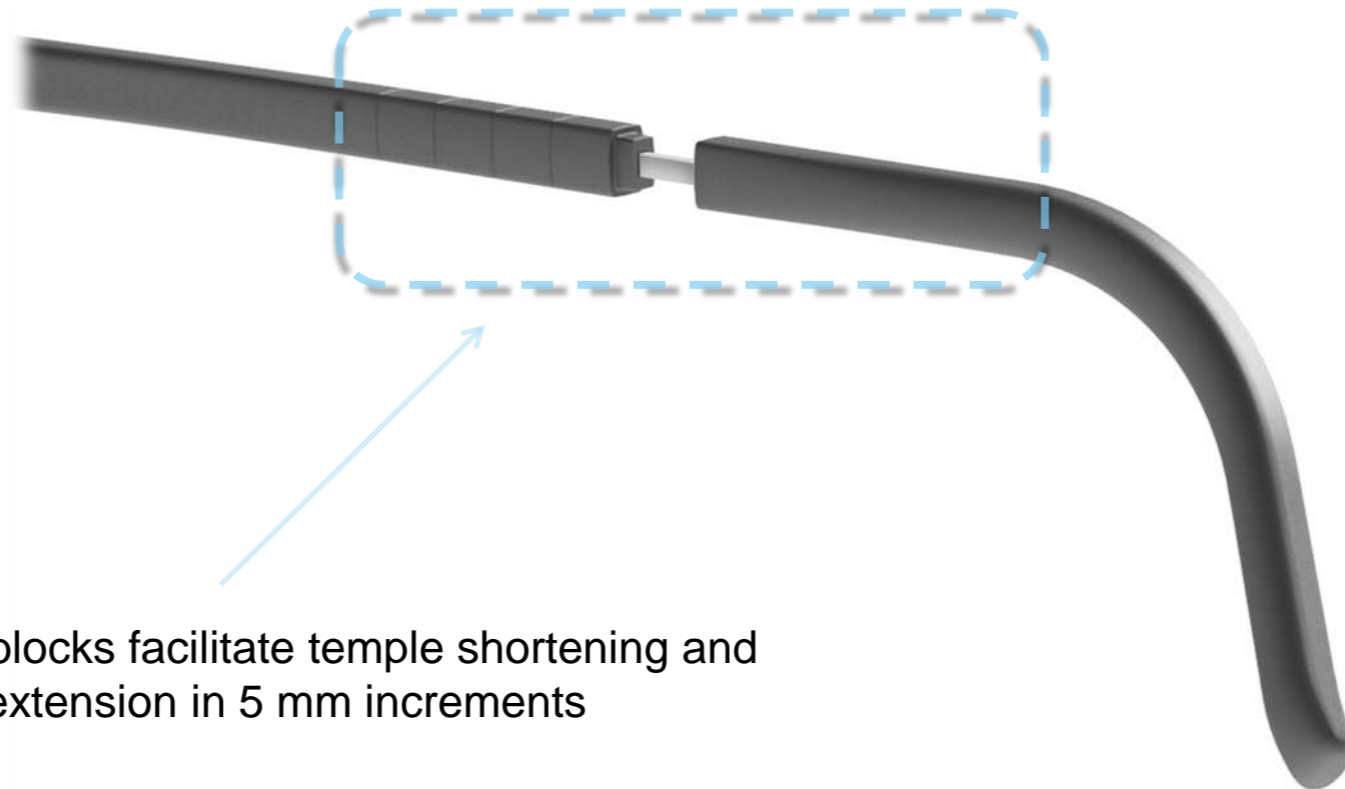
INCLINATION



Incline the temple at the hinge!

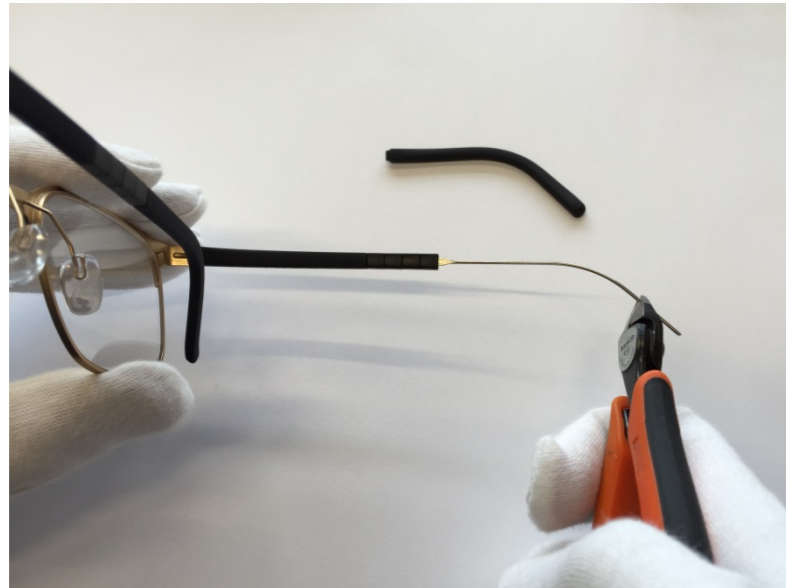
Special radius design to prevent gap between temple and front when adjusting pantoscopic tilt.

TEMPLE SHORTENING / EXTENSION

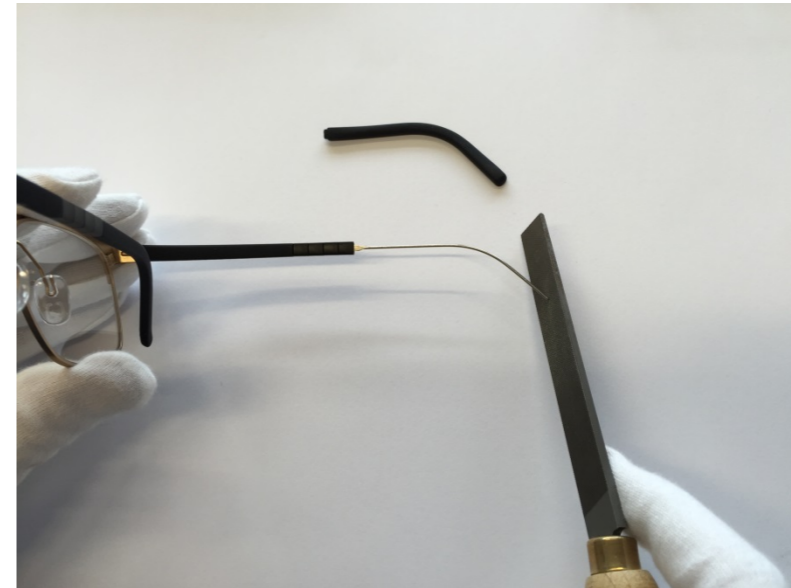


Innovative SPX blocks facilitate temple shortening and temple extension in 5 mm increments

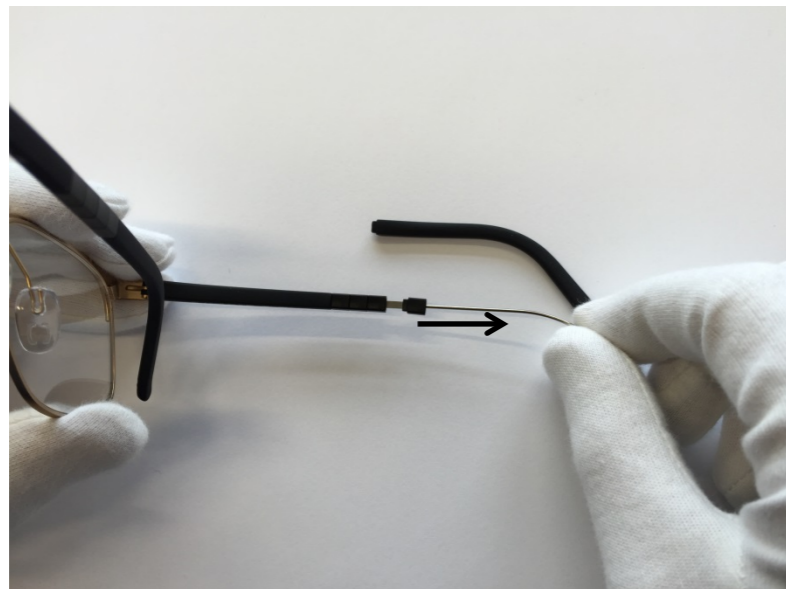
TEMPLE SHORTENING



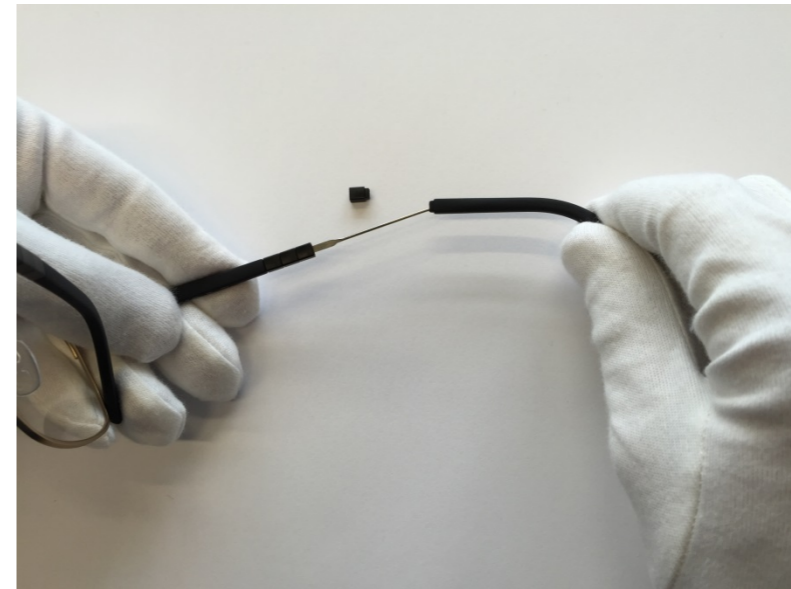
Remove temple end and shorten stainless steel with a diagonal cutter



File down sharp edges and burrs

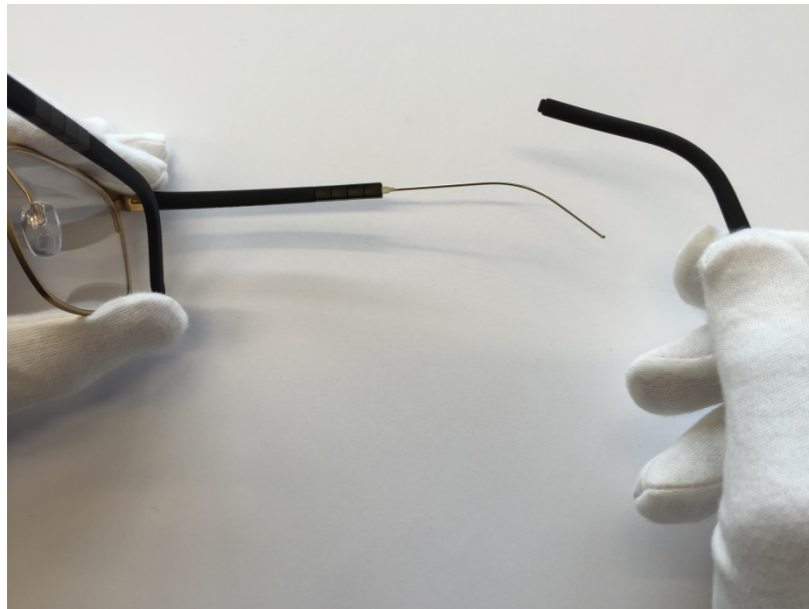


Remove desired number of SPX blocks

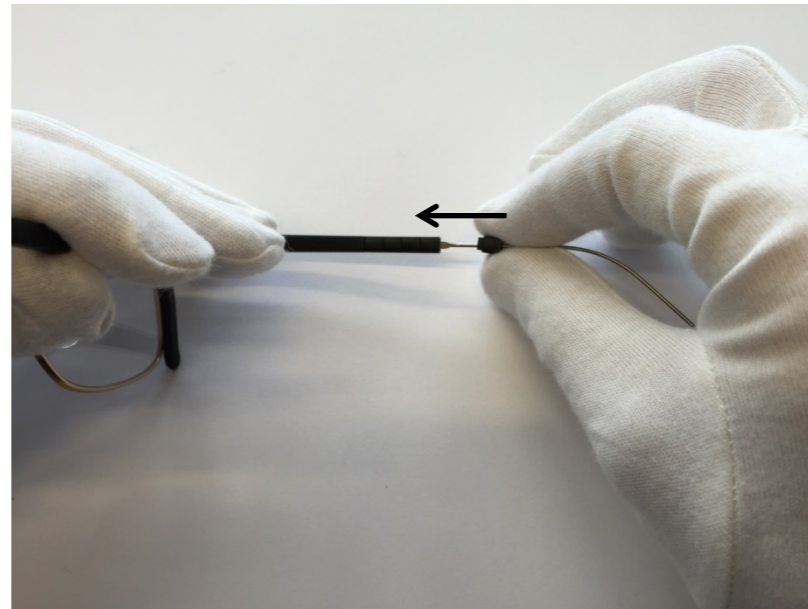


Install temple end and use a small amount of glue if necessary

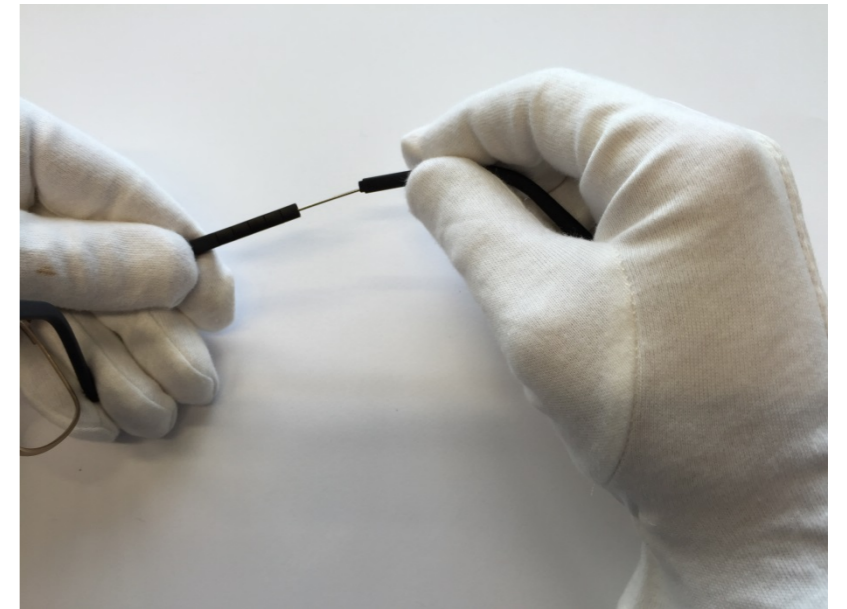
TEMPLE EXTENSION



Remove temple end



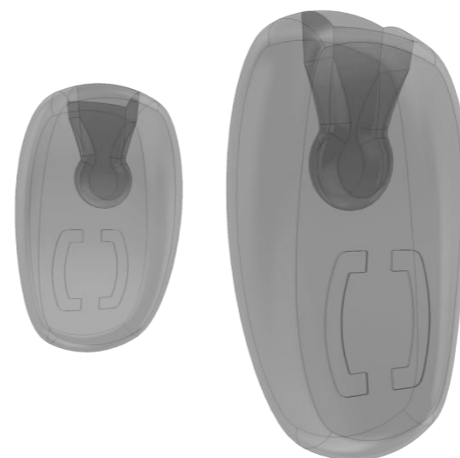
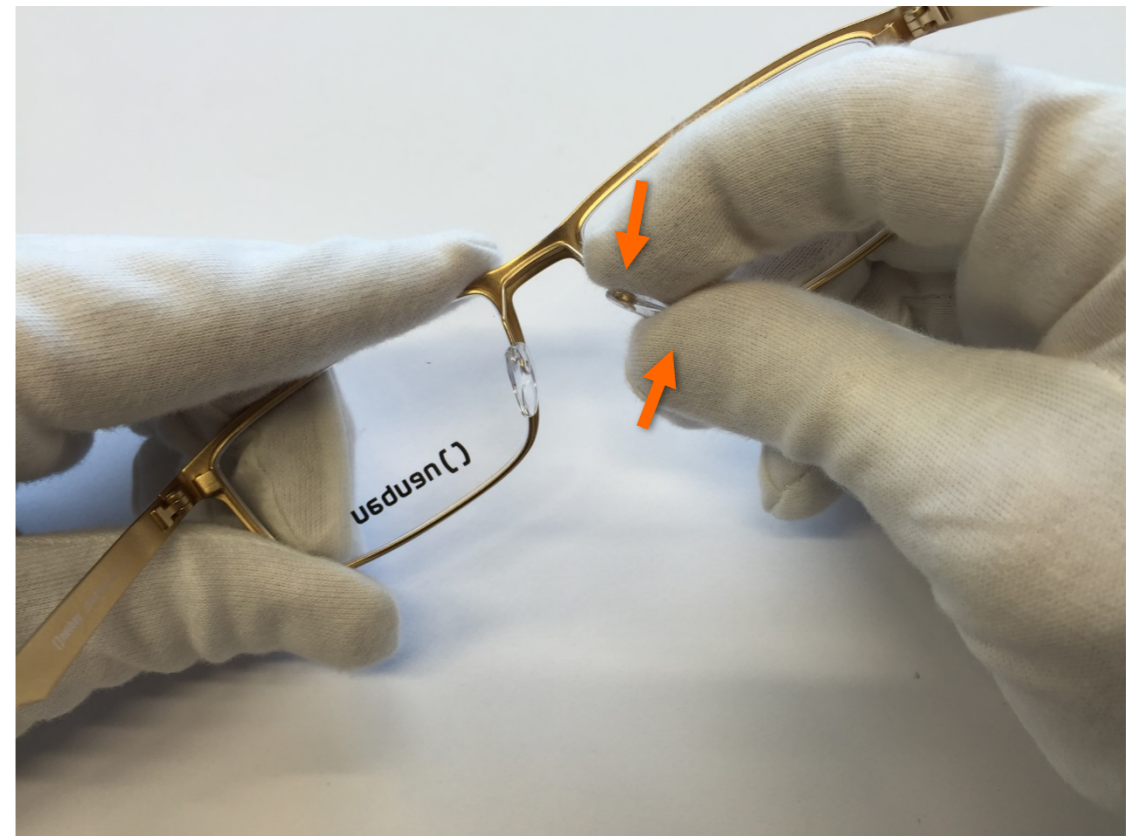
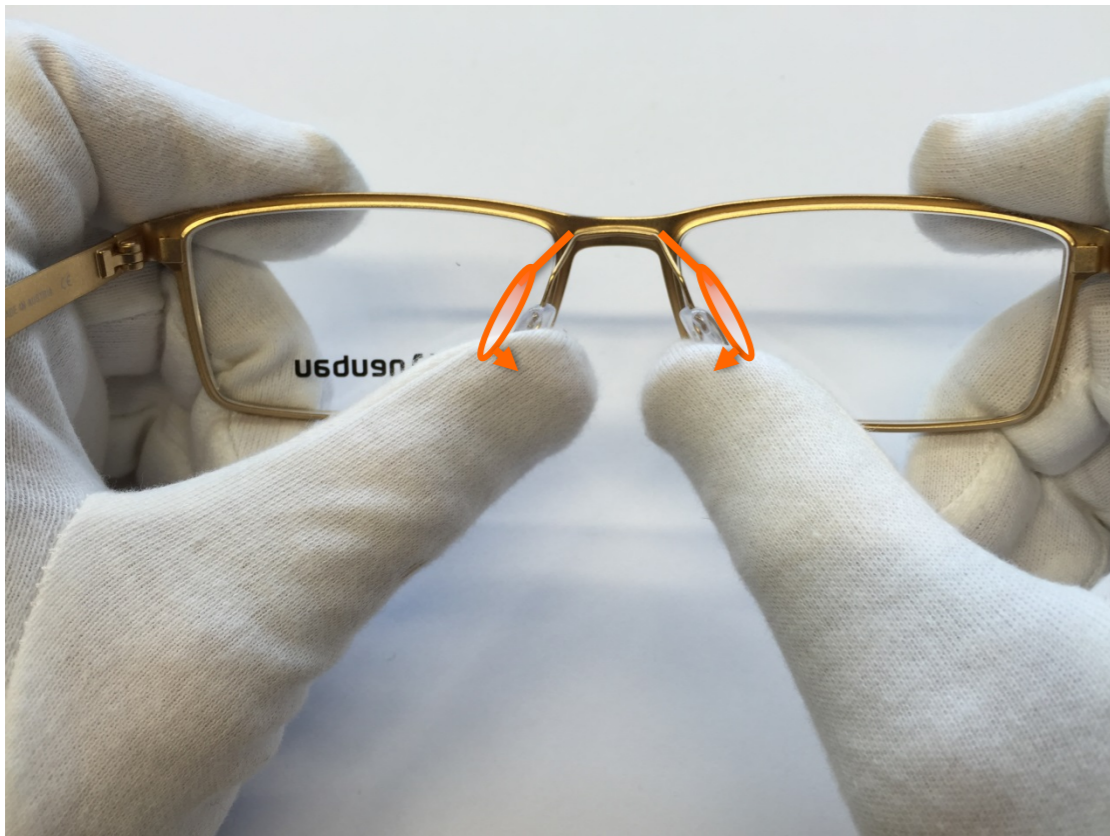
Mount an additional SPX part



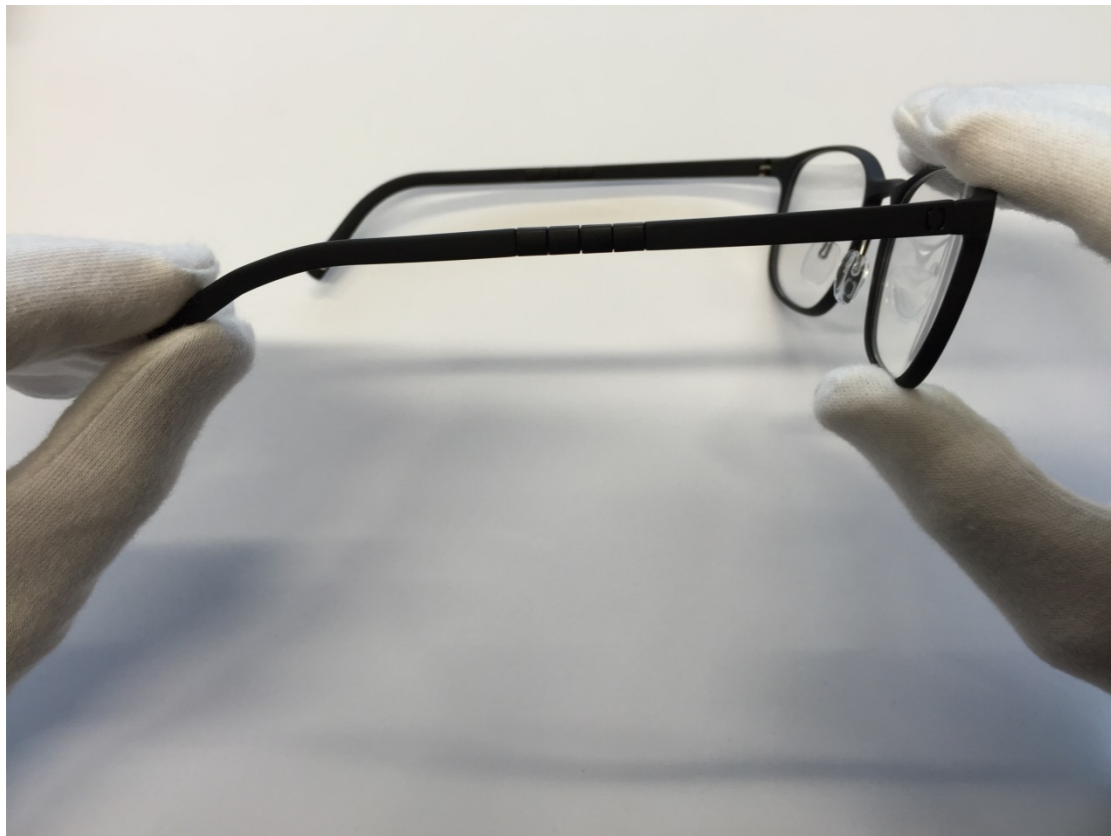
Assemble temple end and use small amount of glue if necessary

RECOMMENDATION: For best stability, it is recommended to lengthen temple by 5mm (one block)

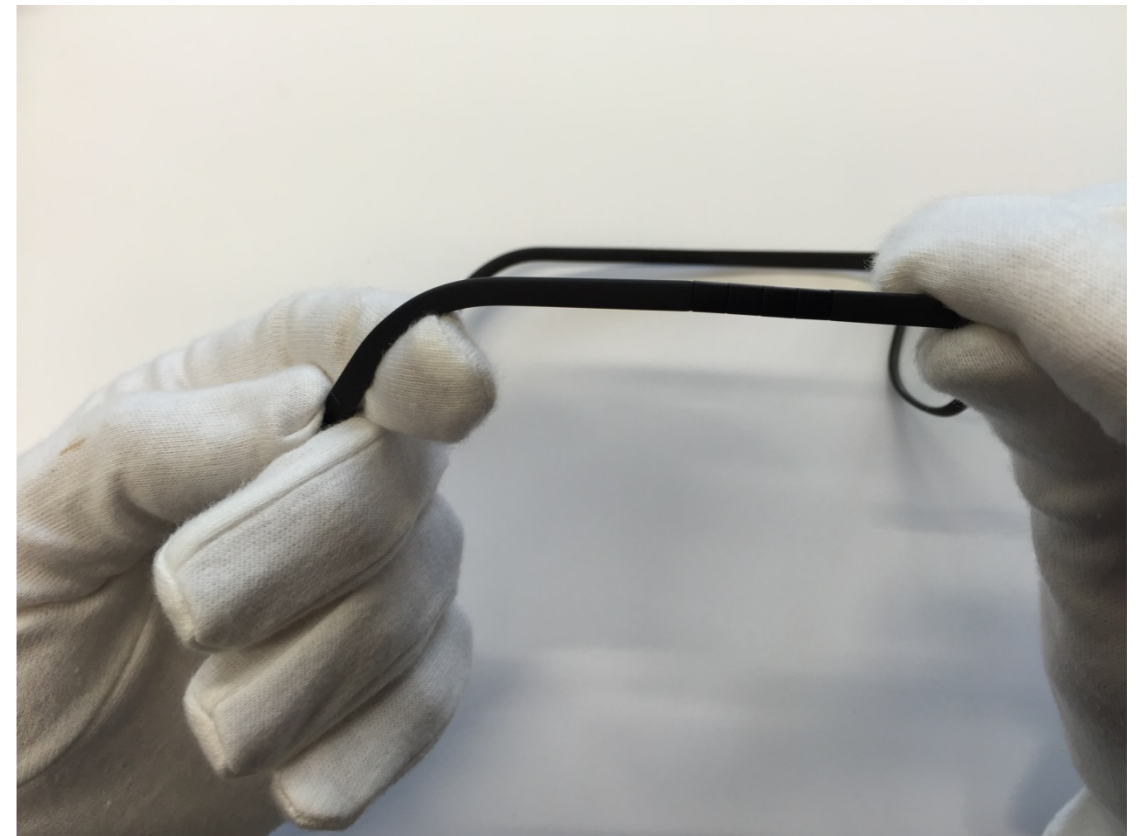
NOSE PADS ADJUSTMENT



TEMPLE ADJUSTMENT



Straighten the temple end in small steps



Adjust the temple end using gentle bends

You may heat the material up to 158 degrees Fahrenheit to ease adjustment